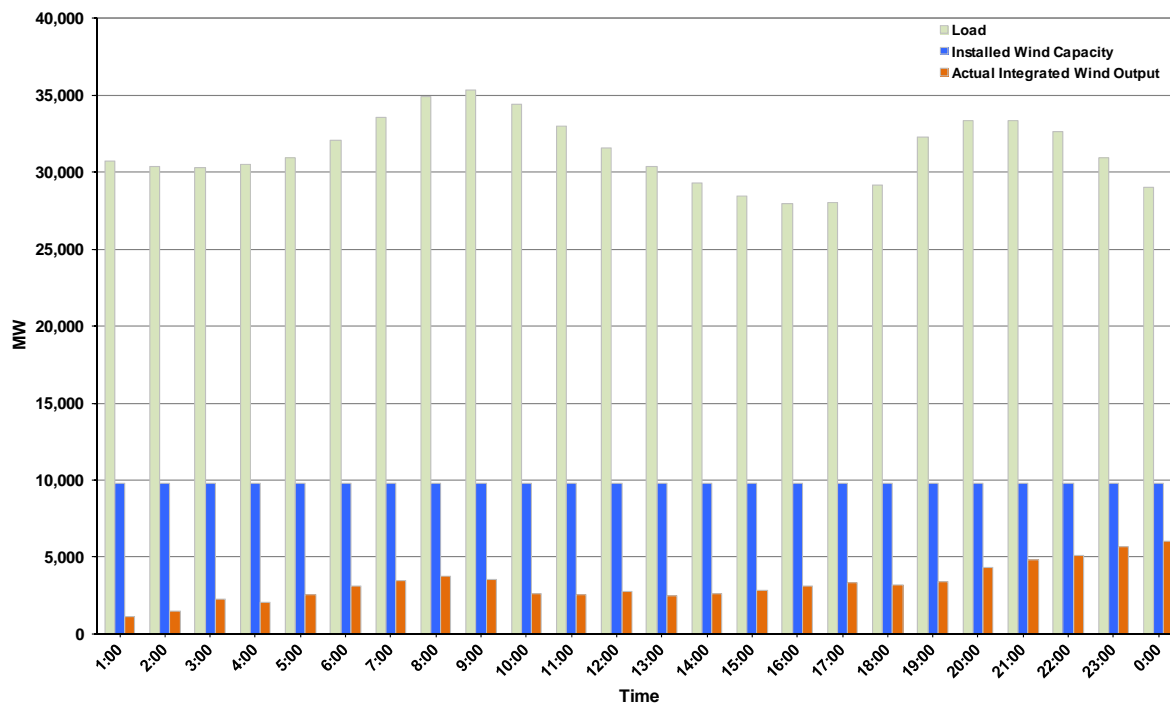




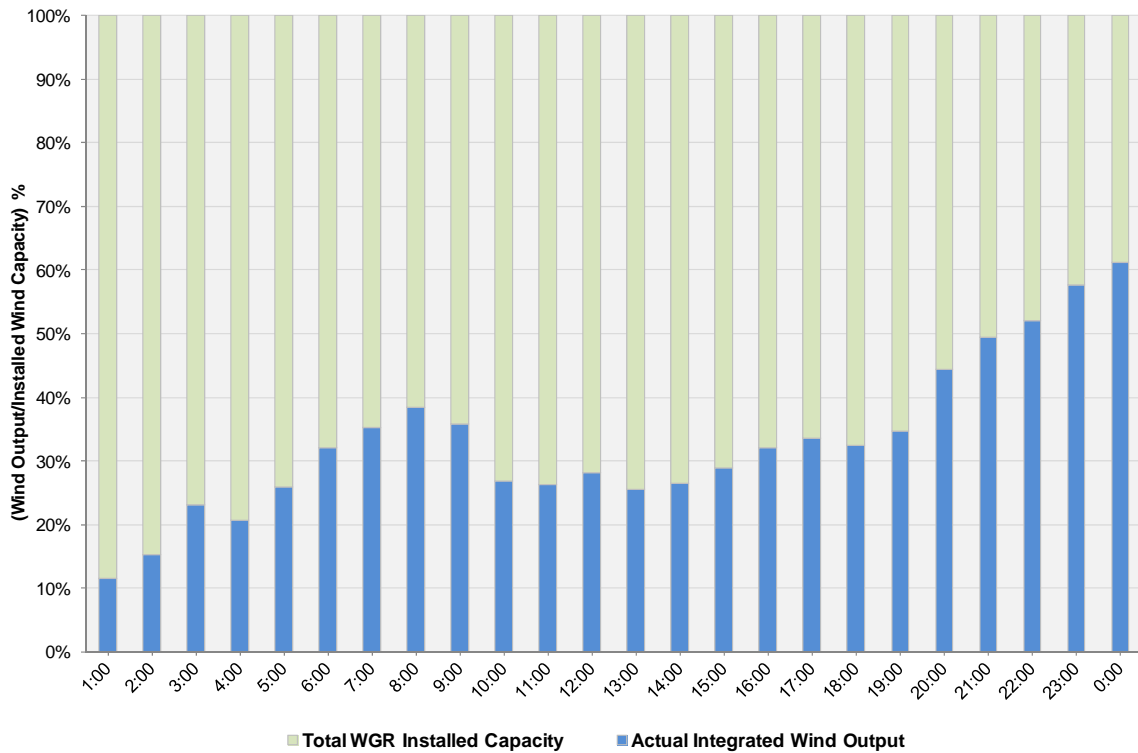
ERCOT Grid Operations Wind Integration Report: 01/29/12

Peak Load	35,328 MW
Load Peak Hour (HE)	09
Wind over Peak	3,508 MW
Wind Record 10/07/11	7,400 MW
Max Wind Value	6,110 MW
Wind Peak Time	23:40
Wind Integration %	21.26%

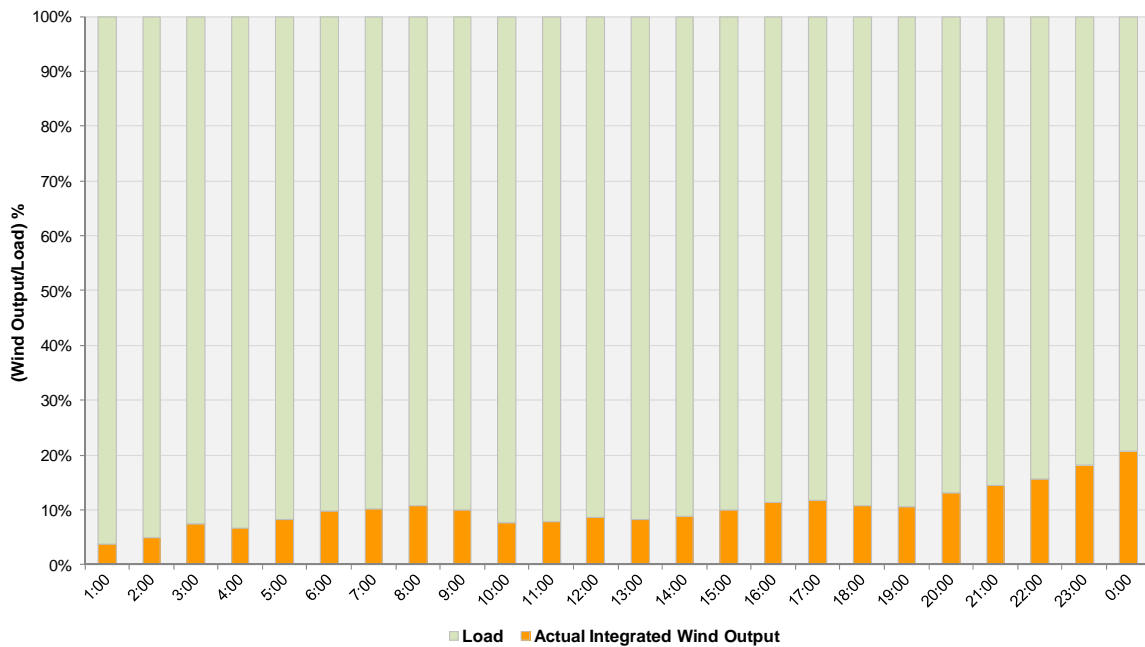
**Hourly Average Actual Load vs. Actual Wind Output
01-29-2012**



Actual Wind Output as a Percentage of the Total Installed Wind Capacity
01-29-2012



Actual Wind Output as a Percentage of the ERCOT Load
01-29-2012



ERCOT Load vs. Actual Wind Output 1/22/2012 - 1/29/2012

